




MILBON

# What's New!

October 1, 2011

Milbon USA, Inc 568 Broadway Suite 606, New York, N.Y. 10012 Tel: 800-431-8930

## Announcements

- **Linkage MEU available this month!**  
Improve the texture of your hair without weighing it down! Linkage MEU is a quick 3-step treatment + weekly homecare that provides instantaneous shine, silkiness and moisture!
- **Fall seminar schedule**  
Visit our website or see the inside of the newsletter for upcoming seminars!
- **New season, new styles!** See our Prejume Styling Lookbook for inspiration on creating different looks using Prejume styling Milks and Waxes!
- **Join us on Facebook!**  
Friend us to receive product updates, share ideas and connect with Milbon!  
  
[www.facebook.com/milbon.us](http://www.facebook.com/milbon.us)
- **Discontinuing Items:**
- **Heat Protection Refill (end of October)**
- **Root Softener Refill (end of October)**
- **Nigelle TF & FF Travel sizes (until stock runs out)**

- **Return policy**  
We do not accept returns after 60 days of invoice date, 15% restocking fee for returned products after 30 days with invoice and products still in its original resalable condition.  
**No returns on irons.**

NEW launch in October!

## LINKAGE MEU

Linkage MeU is a quick 3-step salon treatment with aroma therapy that instantly improves the quality and texture of hair without feeling greasy or heavy. Enjoy silky, smooth, luxurious results for up to 5 weeks with homecare.

### Choose Formula According to Hair Type

Fine-Normal	Normal-Coarse	Coarse & Up
		
Normal Formula	Plus Formula	Ex Formula
Smooth down cuticle for silky feel	Moisturize inside for smooth	Restore CMC lipids for soft feel

### 3 Benefits of carrying MeU in your salon:

- Instant silky, smooth results!
- Quick & easy service!
- Results last for 5 weeks with homecare

### Add Linkage MEU To Your Service Menu

- + **Blow Dry**  
Add the benefits of silkiness and softness to a blow out
- + **Color**  
Improve the feel of hair after a color service (MEU after shampooing out color)
- + **Liscio**  
Add extra shine and smoothness after a Liscio service (MEU after rinsing neutralizer)
- + **In between chemical services**  
Soften new growth and tames ends for better manageability in between chemical services



## October Promotions

**APROU**  
BESSE'S for natural color design  
**Leave-In Treatment**  
Defy aging hair! APROU moisturizes dry hair ends with hydrolyzed collagen!

	
Water Gel Fine-Normal Hair	Milk Moisture Coarse Hair

### Milbon Leave-In Treatment Guide

				
Aprou Anti-aging	Nigelle RX Damage Repair	Heat protect Spray Prevents heat damage	Liscio Crystal Shine Anti frizz & humidity	Mist Detangle & Heat Protects

10% off 6 pcs. (of the same kind)

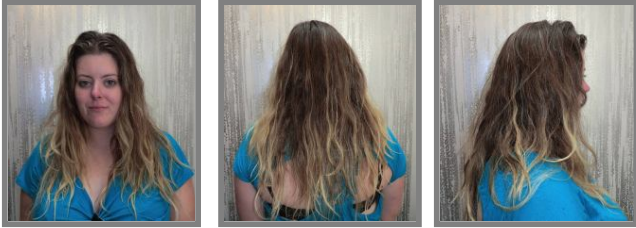
Below is a brief report of our **Cashmere Luminance Seminars!**

**CASHMERE LUMINANCE**

8/21 CA Cashmere Luminance by Kazumi

**BASIC PROCEDURE**

**1 hour 50 minutes**



**Before**

**1. Hair Consultation**

- Hair type: Medium hair but strong
- Texture: Wavy, Frizzy
- Color: 1 month ago



**After**

Blow-dry to finish; Shampoo can be done on the same day after this service



**2. Shampoo** with Fierli Shampoo



**3. Apply Zero** on bleached hair.



**4. Apply Smoothing Solution** on virgin hair first. After process for virgin hair, apply it on bleached hair.

**5. Process**

30 min with steamer for virgin hair.  
5 min for bleached hair.

\*Process check: Should feel smooth when done



**6. Rinse**

Apply Fierli Treatment and comb it throughout the hair.



\*After blow-drying



\*After Ironing

\*Shampooed again, hand dry, then blow-dry to finish!!

**7. Blow dry & Iron**

Iron with 420F for roots, 360F for the ends

**CASHMERE LUMINANCE**

9/12 Houston seminar by Kazumi

**BASIC PROCEDURE**

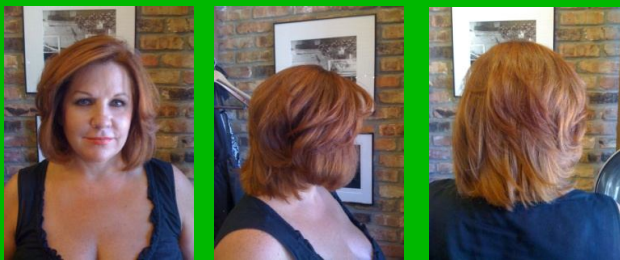
**1 hour 15 minutes**



**Before**

**1. Hair Consultation**

- Hair type: Normal
- Texture: Curly
- Color: Single Process



**After**

Blow-dry to finish; Shampoo can be done on the same day after this service



**2. Shampoo** with Fierli Shampoo



**3. Apply Zero** on 1 inch end.



**4. Apply Smoothing Solution** from nape.



**5. Process**

10 min with heat,  
5 min cool down

\*Process check: Should feel smooth when done



\*After rinsing



**6. Rinse**

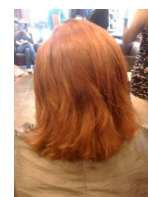
Apply Fierli Treatment and comb it throughout the hair.



\*After Ironing

**7. Blow dry & Iron**

Iron with 410F, 2-3 passes roots to ends



\*Shampooed again, hand dry



# Liscio Crystal Cream & Cashmere Luminance Seminar Schedule

## October 2011

Sunday	Monday	Tuesday	Wednesday	Thursday	Friday	Saturday
						1
2	3 NY (HS) Tara	4	5	6	7	8
9	10	11	12	13	14	15
16	17 NY (E) Yoshie	18	19	20	21	22
23	24 NY (CL) Hikaru	25	26	27	28	29
30	31 NY (C) Yoshie					

### Conditioning Straightening NY (C) by Yoshie/Hikaru Conditioning Straightening CA (C) by Kazumi Morton

#### Course Objective:

Our basic Liscio class. Learn how to straighten curly, unmanageable hair and the theory behind the Liscio process. Achieve natural straight results with minimal styling time for your clients. A certificate will be given after completion.

**Location:** Milbon USA Studio 568 Broadway, Suite 606 New York, NY 10012

**Time:** 9:30am - 3pm

CA location: Beverly Hills, CA (call us at 800-431-8930 for details & registration)

**Time:** 9:30am - 1pm PM class

Cost: \$150

### Efficient Straightening by Yoshie Sakuma NY (E)

#### Course Objective:

Learn how to manipulate products to straighten more challenging hair conditions (i.e. color treated or highlighted hair). This is an advanced class and requires prior Liscio-certification. A certificate will be given after completion.

**Location:** Milbon USA Studio 568 Broadway, Suite 606 New York, NY 10012

**Time:** 9:30am - 3pm **Cost:** \$150

## November 2011

Sunday	Monday	Tuesday	Wednesday	Thursday	Friday	Saturday
		1	2	3	4	5
6 CA (C) AM Kazumi	7 NY (SS) Tara	8	9	10	11	12
13 CA(CL) PM Kazumi	14 NY (C) Hikaru	15	16	17	18	19
20	21	22	23	24	25	26
27	28 NY (CL) Yoshie	29	30			

### Smooth Control & Straight Variations NY (SS) by Tara Sookdeo

#### Course Objective:

Learn two different processes using Liscio for more permanent options. Smooth Control for clients who want smoother, manageable hair and Straight Variations for clients who want to keep their curls but want to reduce the frizz and puffiness. A certificate will be given after completion.

**Location:** Milbon USA Studio 568 Broadway, Suite 606 New York, NY 10012

**Time:** 9:30am - 3pm **Cost:** \$150

### NEW! Cashmere Luminance NY (CL) by Yoshie/Hikaru Cashmere Luminance CA (CL) by Kazumi Morton

#### Course Objective:

Learn how to smooth hair for easier blow drying and manageability. This is our temporary, no commitment solution that lasts 2-3 months. Cashmere Luminance is so gentle that it is ideal for your wavy, frizzy, single processed/highlighted hair clientele! (Formaldehyde free) A certificate will be given after completion.

**Locations:** NY location: Milbon USA 568 Broadway, Suite 606 New York, NY 10012

**Times:** 9:30am - 3pm

CA location: Beverly Hills, CA (call us at 800-431-8930 for details & registration)

**Time:** 2pm - 5pm PM class

**Cost:** \$150

## December 2011

Sunday	Monday	Tuesday	Wednesday	Thursday	Friday	Saturday
				1	2	3
4	5 NY (HS) Tara	6	7	8	9	10
11	12 NY (CL) Yoshie	13	14	15	16	17
18	19	20	21	22	23	24
25	26	27	28	29	30	31

### New! Highlight Smoothing NY (HS) by Tara Sookdeo

#### Course Objective:

This is our advanced class. Previous Liscio certification is required. Learn two different techniques for your highlighted and damaged hair clients. Cashmere Luminance for those who want a temporary, gentle smoothing system and Liscio for clients looking for permanent options. Attendees will receive a certificate after seminar.

**Location:** Milbon USA Studio 568 Broadway, Suite 606 New York, NY 10012

**Time:** 9:30am - 3pm **Cost:** \$150

For additional seminar information and registration, please contact us at (800) 431-8930 or visit our website at

[www.milbon-usa.com](http://www.milbon-usa.com)

## Seminar Value Packs for Liscio & Cashmere Seminar Attendees

Please choose the value pack corresponding to your seminar as reimbursement for the seminar fee OR use the \$150 as credit towards products of choice.

- Please note that value pack products are non-refundable and non-exchangeable
- Pickup available for NY seminars or products can be shipped to the salon (shipping fee \$10 + tax)

### Liscio Seminar Value Pack (Conditioning & Efficient Straightening) - choose one

#### Liscio Value Pack



410477	LISCIO CRYSTAL Straightener Strong	1
410478	LISCIO CRYSTAL Straightener Normal	2
410479	LISCIO CRYSTAL Straightener Mild	1
410483	LISCIO Neutralizing Lotion	4
113480	LISCIO KNOTEUR ZERO	2
410495	LISCIO Processing Stopper Bottle	1
410510	LISCIO Heat Protection Spray Bottle	1
410815	Nigelle ER Shampoo 8.1 oz.	1
410805	Nigelle ER Treatment 8.5 oz.	1
114860	PREJUME Milk #1 (or Prejume Milk #3)	1
410476	Liscio Crystal Shine Serum	1
827007	Work Brush	

Value: \$215

#### Homecare Value Pack



140370	NEU DUE Willowluxe Shampoo w. Pump	1
140400	NEU DUE Willowluxe Treatment w. Pump	1
413244	NIGELLE LX Shampoo w. pump	1
413248	NIGELLE LX Treatment w. Pump	1
410820	NIGELLE ER Shampoo w. Pump	1
410810	NIGELLE ER Treatment w. Pump	1
111101	APROU Water Gel	2
111100	APROU Milk Moisture	2

Total Value: \$215

#### Linkage MEU Value Pack



211200	Linkage MEU (1) Refill Bag	1
831300	Linkage MEU (1) Empty Pump	1
211210	Linkage MEU (1+) Refill Bag	1
831301	Linkage MEU (1+) Empty Pump	1
211220	Linkage MEU (1X) Refill Bag	1
831302	Linkage MEU (1X) Empty Pump	1
211230	Linkage MEU (2) Refill Bag	1
831303	Linkage MEU (2) Empty Pump	1
211240	Linkage MEU (3) Refill Bag	1
831304	Linkage MEU (3) Empty Pump	1
211250	Linkage MEU (3+) Refill Bag	1
831305	Linkage MEU (3+) Empty Pump	1
211260	Linkage MEU (3X) Refill Bag	1
831306	Linkage MEU (3X) Empty Pump	1
130770	Linkage MEU (4)	5
130780	Linkage MEU (4+)	5
130790	Linkage MEU (4x)	5

Total Value: \$229.50

### Cashmere Value Pack - choose according to your seminar

#### Cashmere Luminance Seminar Value Pack



410505	Liscio Smoothing Solution (Cashmere Luminance)	3
113480	Liscio Knoteur ZERO	1
128900	Fierli Shampoo Retail Size	1
128940	Fierli Shampoo Pump	1
128910	Fierli Treatment Retail Size	1
128950	Fierli Treatment Pump	1

Value: \$157.00

#### Highlight Smoothing Seminar Value Pack



410505	Liscio Smoothing Solution (Cashmere Luminance)	2
128900	Fierli Shampoo Retail Size	1
128910	Fierli Treatment Retail Size	1
410479	Liscio Crystal Cream Mild	2
410483	Liscio Crystal Neutralizing Lotion	2
410815	Nigelle ER Shampoo Retail Size	1
410805	Nigelle ER Treatment Retail Size	1
113480	Liscio Knoteur Zero	2
410510	Heat Protection Spray Bottle	1
827007	Work Brush	2

Value: \$202

Visit Milbon's website at [www.milbon-usa.com](http://www.milbon-usa.com) and Facebook for updates, new products and styling tips!

### GET THESE LOOKS WITH PREJUME STYLING MILKS & WAXES!



**PREJUME**  
Professional selection for form work

