

## BASIC PROCESS

HAIR TYPE	TEXTURAL DAMAGE			STRENGTH
	Low	Medium	High	
FINE	C/T-H	C/T-H · CYS		
NORMAL	T/C	C/T-H · CYS		
COARSE	TG	T/C · C/T-H	CYS	

Check hair type and condition to choose the right solution. These solutions are intermixable. This table shows recommended choice of items for Asian hair. Caucasian hair tends to be more resistant. Choose an appropriate item based on hair strength and condition.

### 1 SHAMPOO AND EXAMINE

Shampoo and examine the condition of hair. If hair is porous and dry, proceed with pre-treatment.

### 2 PRE-TREATMENT (OPTIONAL)

Pre-treatment with Inphenom Step 1, Step 2 and Step 3. Then, rinse.



### 3 APPLY HAIR WAVING LOTION

Wrap damp hair and apply hair waving lotion. Suggested amount/head = 80ml

Keep hair moist while wrapping hair to achieve even penetration. Use paper to hair ends to prevent "fishhooks."

### 4 PROCESS

Cover head with plastic cap and process for 5-15 minutes at room temperature.

### 5 CHECK & RINSE

Check curls, rinse well with warm water.

### 6 NEUTRALIZE

Apply Milbon Perm Neutralizer 2. Suggested amount/head = 80ml

### 7 PROCESS

Process for 5 minutes. Reapply neutralizer and process for another 5 minutes.

### 8 RINSE

Remove rods and rinse hair.

### 9 FINISH WITH INPHENOM (OPTIONAL)

Finish with Step 4 and Step 5, then rinse.



### SUPPORT ITEM: Acid Control

Acid Control normalizes pH level after waving lotion. Dilute Acid Control with warm water (1:4) and rinse each rod with hair. Suggested amount: Acid Control 20ml + warm water 60ml



## DESIGN TECHNICAL POINTS

### CREATING DIFFERENT WAVE PATTERNS

Different rod placements create different wave patterns.



HAIR TYPE: COARSE  
DAMAGE LEVEL: HIGH  
CHOICE OF PRODUCT: CYS  
PROCESS TIME: 12 MIN.

### CREATING VOLUME

Use different rod sizes to create a dimensional design. Use multiple sizes of rods for more dimensional design (more volume). Use the same rods to control the volume.

### EVEN PENETRATION

Mist hair with water for an even penetration of hair waving lotion. Spray water on hair before, during and after wrapping hair on rods. Water helps an even penetration throughout the hair.



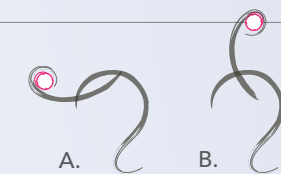
### USE END PAPER

Use end paper, one over another, to curl the ends smoothly. End paper can help avoid "fishhooks."



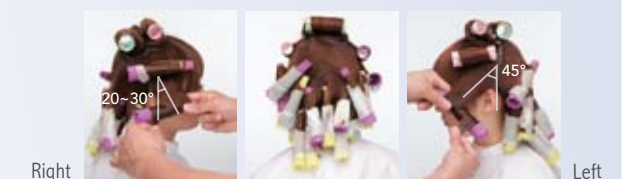
### CONTROL THE VOLUME AT TOP SECTION

A. Volume Down: Pull the panel down to flatten roots.  
B. Volume Up: Pull the panel up to lift roots.



### CONTROL FLY AWAY

Control fly away by changing the panel direction at side sections. When hair grows in clockwise direction, the right side tends to fly away. Taking a right side panel to the front at 20-30 degree angle can avoid fly away comparing to 45 degree angle on the left side.



## PREJUME WAVE PRODUCT KEY



Milbon Perm Neutralizer 2  
Available Size:  
800ml (27.1fl oz)  
(10 heads)

# PREJUME

Professional selection for form work

Prejume curling lotion gives hair immediate softness, allowing bouncy curls and more styling options; if you want a casual relaxed wave for the day, you can blow dry to loosen the bouncy curls. If you want to emphasize the curls for a special occasion, you can scrunch them up with hair product. Whatever style you're after, hair will have irresistible, touchable texture with Prejume.

## PREJUME WAVE PRODUCTS

Available Size: 400ml (13.5fl oz) (5 heads)



PREJUME  
TG1



PREJUME  
T/C1



PREJUME  
C/T-H1



PREJUME  
CYS1



Milbon Perm  
Neutralizer 2  
Available Size:  
800ml (27.1fl oz)  
(10 heads)



MILBON USA, INC. [www.milbon-usa.com](http://www.milbon-usa.com)  
568 Broadway, Suite 606, New York, NY 10012  
Tel: 212-431-8438 Fax: 212-431-8638 Toll free: 800-431-8930



# PREJUME WAVE

